



Society Newsletter

Lion's Club pin collection from former owner John Bull

Among more than a 100 visitors at its annual Heritage Fair the Port Hope and District Historical Society was pleased to have MP Rick Norlock and his wife, Judy, drop by for a short visit and have lunch.



Our newest display this year was a large collection of Lion's Club pins, once owned by John Bull. John was born in Cobourg in 1941 and after High School went to work for the Bank of Nova Scotia in Niagara Falls. He stayed with the bank for about five years and left because they didn't want him to marry his sweetheart, Marion. He dated her for seven years before they eventually married. "They just couldn't afford to get married," John told the writer in March 2012. He returned to Baltimore and worked in the tobacco industry. There were numerous tobacco farms around in those years. Actually he worked on tobacco during his High School years as well.



Eventually, John was offered a job with General Electric in Cobourg as a Millwright, but after a few years the company went from employing 700 employees to 100 so he went to work for United Tire in a similar capacity.

In 1977 he bought the General Store in Garden Hill from Bert Wilson but continued working for United Tire after a year's leave of absence and much persuasion by the manager. During this time Karen Dougherty managed the store for him. Eventually United Tire sold out and John was offered a job with the company in China. He declined and returned to managing his Garden Hill business. The same year that John bought the store and moved to Garden Hill, he joined the Bewdley Lions Club and over the years his commitment to the goals of the organization moved him from member all the way to become the President.



MP Rick Norlock enjoying a chat with local citizens at opposite side of the table

During this time John took a real estate course and was very successful through the years. He sold the General Store in 1990 and began working full time in the real estate business. Meanwhile, his love and best friend, Marion, was experiencing serious and declining health. Eventually, she had to be moved to Community Care in Port Hope, and John felt compelled to move to town to be near her. Marion passed away September 2, 2010. When John's house was put on the market he decided to put his collection up for sale. Rod Parrott, a diehard collector of things of interest happened to come across them first and purchased them. **[Cont'd page 3]**

Executive Council

President

Joan Ashby Parrott

Vice President

Cal Morgan

Secretary/Treasurer

John Dietz

Larry Ashby

John Boughen

Fred Hodgson

Gary Ough

Rod Parrott

*Preserving the past for
future generations*

In this Issue

John Bull and Lion's pin display — p. 1 & p.3

President's report — p.2

Heritage Fair photo collage — P.3

Brief review of 2011 — P.4

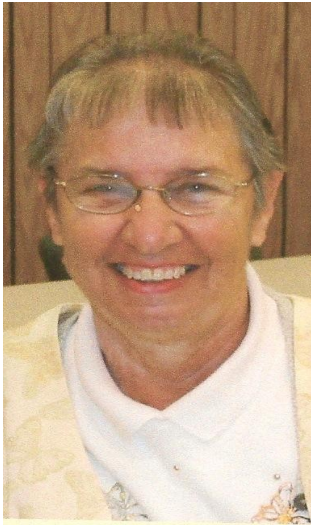
Events Calendar— P.4

Printer

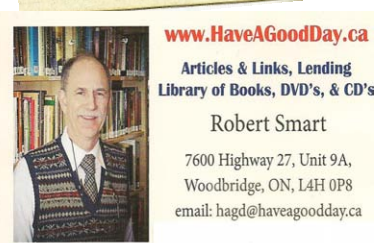
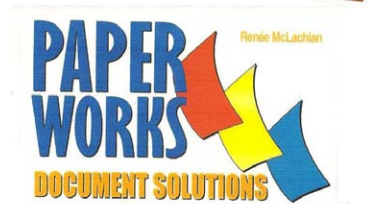
Paper Works

Port Hope, Ontario

President's report



PHDHS [former EDHS] is pleased to have the support of the following business members



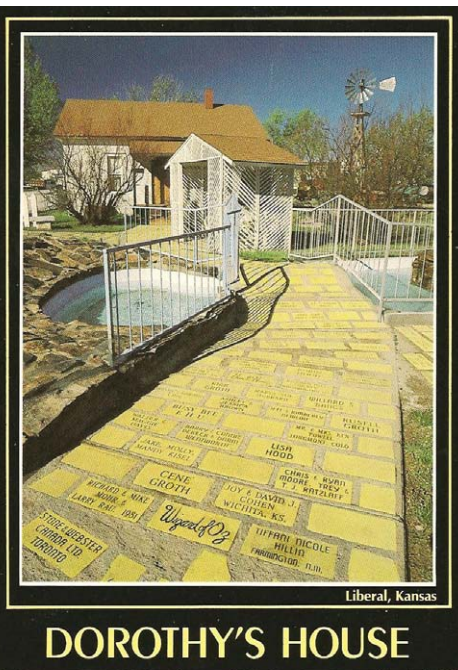
In this report I thought I would include an incident Rod and I experienced during one of our outings in Florida this past winter. As many of you know we are avid postcard collectors and attend as many gatherings as possible to exchange and obtain old post cards. This year while attending a meeting in a town in Florida, we found an interesting card promoting Dorothy's House. No! It was not Garden Hill's Dorothy's House Museum. This house, pictured below, is located at 567 East Cedar Street, Liberal, Kansas, U.S.A.

Liberal, Kansas is the home of two homages to the 1939 motion picture, "The Wizard of Oz." The first is Dorothy's House which has been carefully restored and furnished to match the house shown in the movie. And the second homage is "The Land of Oz," which contains a large collection of memorabilia.

The Land of Oz consists of 5,000 square feet of animated entertainment – good and bad witches, the Munchkins, talking trees, winged monkeys, and of course, Dorothy, the Scarecrow, Tin Man, the Cowardly Lion, and Toto, too. The original model of Dorothy's house used in the 1939 filming of the movie "The Wizard of Oz" is seen in one display.

Note below the "yellow brick road" on which visitors can have their name installed on a brick after remittance of an appropriate donation. The real Dorothy's House was built in 1907 and donated to the Seward County Historical Society. Volunteers moved it to its present location.

And speaking of volunteers we're hoping that many of our members who are able will help out with the programing at our own Dorothy's House in the next couple of months before our summer opening of June 30th, 2012.



Please give me a call if you would like to volunteer a little spare time at DHM [905-885-2981].

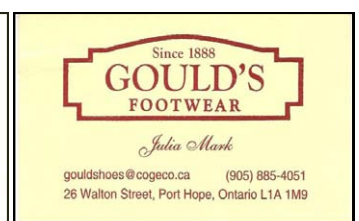
I would like to thank everyone who attended the PHDHS Heritage Fair on Sun. Mar. 25th at the Lion's Centre. Also a special thank you to the volunteers who helped during the day, and the vendors who put their displays up for everyone to enjoy. It was a very successful day.

There were eight draws made, plus one main draw, won by Beverley Batchellor — a gift certificate donated by RAILSIDE Restaurant.

Thank you everyone! Looking forward to seeing you at Dorothy's House Museum this summer.

Sincerely,

Joan Ashby Parrott
President



Lion's Club pin collection [Cont'd from Page 1]

Realizing the importance of this collection, what they meant to John and the thousands of dollars they represent in contributions to the local community, the PHDHS was pleased to have the opportunity to recognize John's collection at it's Heritage Fair and to publish a little of John's story in its April 2012 Newsletter. We also commend Mr. Parrott for his efforts in setting up the display for public viewing.

PHDHS Heritage Fair 2012 at Lion's Club



For Art Marvin it's back to the one-room school house and having to stay after class to finish his homework! Art had a huge display of the area with extensive coverage of the rural school system in the former Township of Hope.



Our family didn't exactly come from the wrong side of the tracks, but we were certainly within the sound of the train whistles. — US President Ronald Reagan

Last Season's Guest Speakers



In September the Society was privileged to have Sue Stickley and Kathryn McHolm speak to the members on behalf of the Friends of Wesleyville Village focusing on the Wesleyville United Church restoration project and it's continuing success.

At our October meeting we heard from Art Marvin and Farini's connection to their family farm, including some of his remarkable exploits in the entertainment world. Farini was a Port Hope man before he was a man of the international scene [See Jan. '12 Newsletter for more].



In November Craig Ross from Ross Funeral Home gave us a very interesting and intriguing presentation on the history of graveyards, burials and ways we have disposed of those who once lived among us.

This past January we were pleased to have John Boughen, one of the Society's executive members share his extensive knowledge on local history with special attention on the Bletcher property just north of Port Hope on 28 Highway and their Inn and Stage Coach operations.



Events Calendar

Regular Monthly meetings at the Ganaraska Conservation Authority Meeting Room, 2216 Hwy 28 North, Port Hope, ON

Dorothy's House Museum Summer weekend events to be announced in the near future.

Wed., 7 p.m., April 25, 2012 Annual General Meeting at GRCA Meeting Room including "Show and Tell."

Please note: As of December 31, 2011, we began a new year. In order to vote at the AGM you will be required to have your membership renewed for 2012.

Contact Information

PHDHS
P.O. Box 116,
Port Hope, ON
L1A 3V9
Web: www.porthopehistorical.ca

Joan Ashby Parrott
President
905-885-2981; Cell: 1-905-922-6439. Note: If no response please leave message at 905-797-2291

Membership Rates

Single \$15.00
Couple \$25.00
Business \$40.00
Lifetime \$75.00

Stories, or story ideas, are always welcome. Email: cmorgan@eagle.ca